

# *Sanding Solutions*

砂光解决方案



**IMEAS**

1966 50 Years of 2016  
Innovation and Service



# Portrait

*“Offering innovative solutions, with high-technological contents, featuring precision and productivity”*

We have chosen a challenging mission that aims at the future and is written in the name of our company: *Industrial Machines, Equipment And Specials*.

Imeas has been following this vocation since its birth in 1966. Over the years the company has become a key actor in the processing of wood based panels, rubber products and stainless metals, among others.

With the support of its highly-qualified professional staff, own offices and agents located in Europe, the Americas, Asia and Oceania, Imeas constantly supports each

Customer along the way of value creation, product development and business continuity.

In its headquarters Villa Cortese (Milan) the company does sales, engineering, production and customer support.

About five percent of the annual revenues are reinvested to develop new products, processes and to perform optimization tests on the company R&D center, equipped with full-scale machines.

A tradition of responsibility, innovation and customer support that has been going on for more than 50 years.

**“为实现更高的精度和生产效率,提供高科技创新性解决方案。”**

我们选择了这一面向未来的挑战性承诺。这同时体现在公司的名称中:专用机床和成套设备生产厂。

从1966年公司成立之日起,意大利 imeas股份公司一直信守承诺。今天我们已经成为在人造板、橡胶和金属加工领域的领先公司。

imeas分布在欧洲、北美、中国和大洋洲的专业团队为每位用户提供不间断技术支持和服务。

这充分肯定了50年来我们一直追求的责任、创新和用户支持的理念。

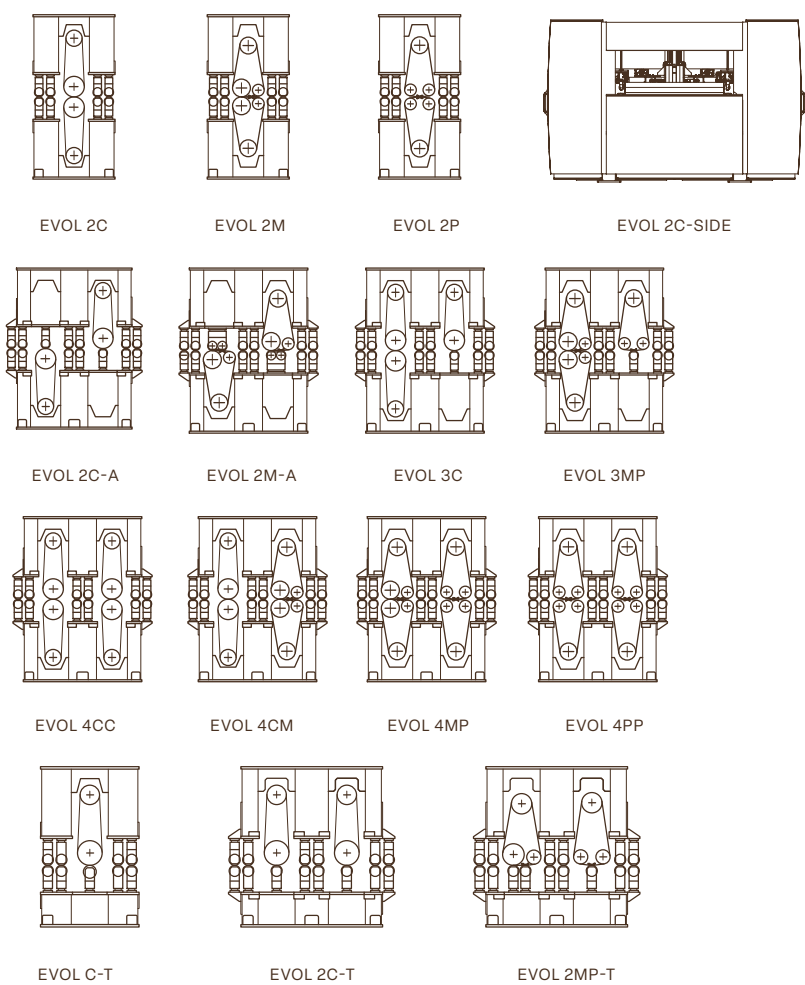


# Imeas Applications & Models



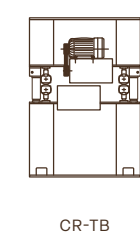
产品系列和型号

**Sanding**  
of MDF, PB  
Plywood, OSB,  
CLT, Glulam  
and others



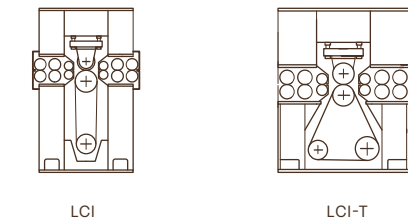
定厚和砂光

**Cross Sanding**  
of MDF and PB



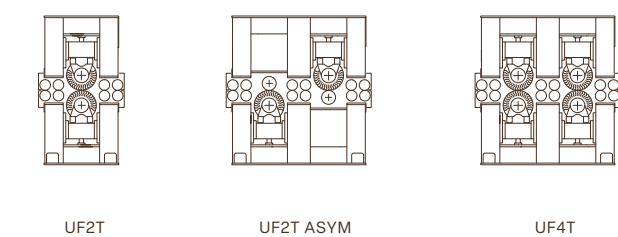
横砂

**Grinding**  
of HPL and flexi-  
ble materials



高压贴面防火板  
拉毛

**Brushing**  
of MDF



超精抛光

Working widths

加工宽度

1600 - 1900 - 2300 - 2600 - 2900 - 3200 - 3600 mm

# EvoL Sanding Machines

## Sanding Technology Evolution

The new **EvoL** model represents Imeas' ninth generation of sanding machines.

As the name suggests, it is the evolution of the company's 50-years long experience and know-how in sanding of wood based panels.

As a result, **EvoL** machines not only integrate state-of-the-art control technologies like our premium **Full Control System™** and **Full Control Belt™**, but also simplify maintenance by reducing the number of components and improving their accessibility in all-important areas.

**EvoL** is a family of machines engineered to evolve continuously to face an ever challenging business and as such they offer:

- Excellent calibration
- Superior sanded surface
- Cost savings
- Simplified operation
- Flexibility



# EvoL

SANDING EVOLUTION

## Evoluzione della Tecnologia di Levigatura

新**EvoL**机型推出第九代Imeas砂光机。

正如名字所述, 50年经验的进化及木质面板的砂光诀窍。

因此, **EvoL**机械不仅配备领先控制技术, 例如我们的TM全控制系统及TM皮带全控制装置, 且通过减少部件数量及在设备重要部位完善简易性的方法使保养更简单。

**EvoL**系列设备是本于持续发展的目的及针对今日的竞争环境而设计。设备提供:

- 出色的校准
- 优质的砂光
- 操作成本的节省
- 使用简单
- 灵活





# CR-TB Cross Belt Sanders

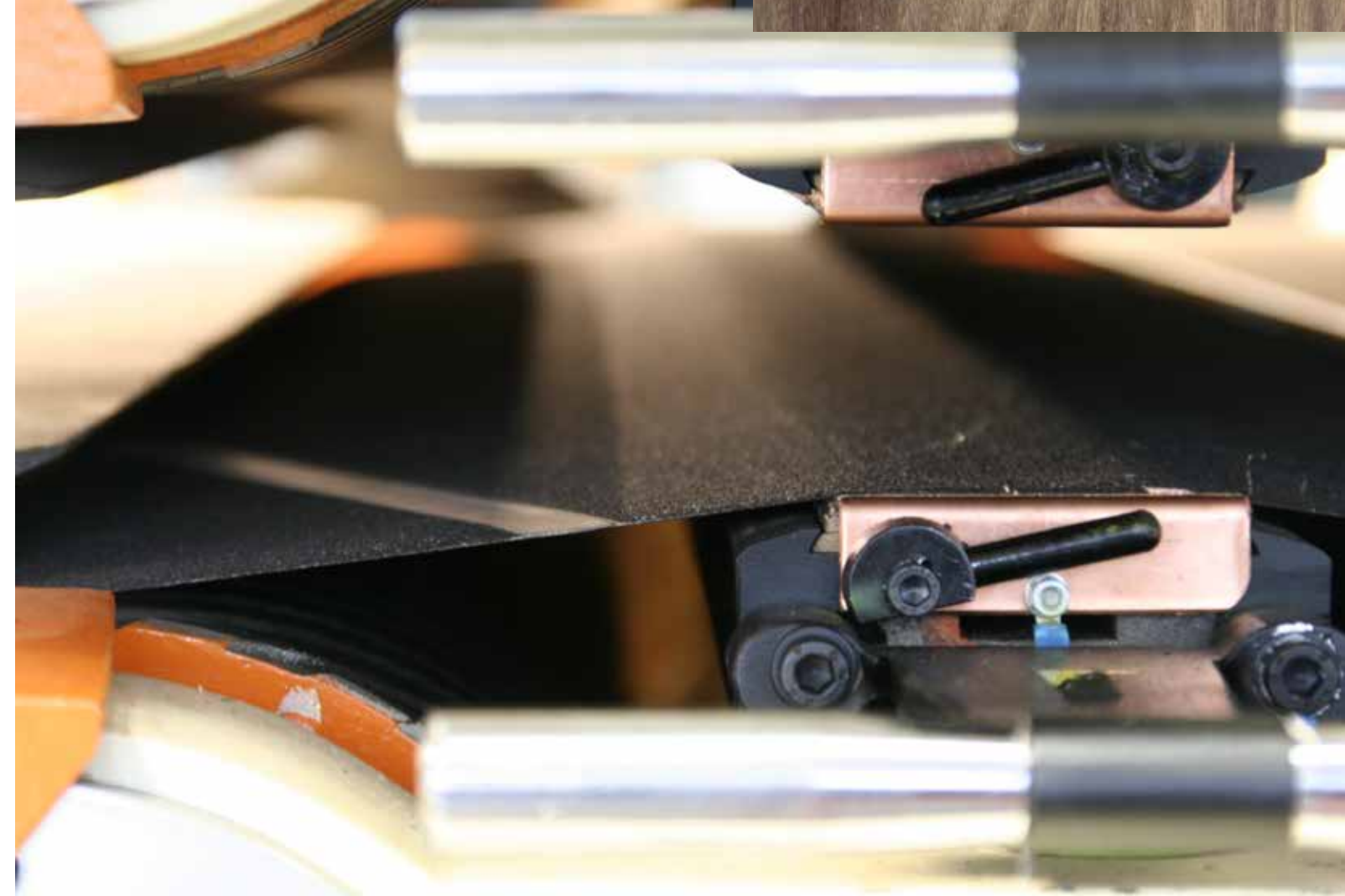
*Superior finishing on MDF/HDF, CLT and PB boards*

In nowadays highly competitive environment, the best way to create value is to differentiate its own products from competitors ones. Hence the need to integrate value-added process into the sanding line to improves the surface quality especially for panels that have to be varnished or coated with light melamine paper.

Specially suited for MDF, HDF and particle-board panels the cross sander was developed to reduce the roughness and improve the overall surface appearance, a goal that is

achieved by two abrasive belts that sand the panel crosswise the feed direction. The cross sander allows:

- to remove marks and lines
- to reduce the surface roughness
- to decrease the quantity of paints and their cost
- to reduce the use of solvents
- to improve the impact on the environment.



## 用于中纤板和刨花板的完美精砂技术

在当代激烈市场竞争的形势下，最好的脱颖而出的方式是创造出能把竞争对手拉开档次的产品。在客户已有砂光线的基础上，通过这台设备即可实现板材产品的增值，特别适用于板材砂光后的直接油漆涂饰或三聚氰胺装饰纸的贴面。

此设备适合于中/高密度纤维板和刨花板生产。横砂机型的研发是为了有效降低板面粗糙度、提高板面的光洁细腻度，它是通过上下两根高速运转的砂带，当板材沿长度方向进给时，其对板面在横向方向进行磨削。

横砂砂光机可以实现：

- 去除板面横纹纵纹等砂光缺陷
- 降低板面粗糙度
- 减少后续的油漆消耗量及其成本
- 减少后续的溶剂消耗量
- 通过使用较少油漆从而实现环境友好



# EvoL-CLT

## Wide belt sanders for CLT tpanels

This state-of-the-art series of machines have been specifically engineered for processing thick, cross-laminated boards.

The offset units configuration, the wide machine opening (up to 400mm), the powerful main motors and feed gearboxes, the precise electronic unit positioning all, work together to deliver a perfect, smoothly sanded surface.

The advanced graphical HMI interface combined with our FCS and FCB systems for unit positioning and belt tracking, turn complex operations into simple activities.

Additionally, they assure increased abrasive belt life, reduced operational costs and increased overall productivity.

## 用于交错层压木的定厚和精砂砂光机

该系列技术领先的砂光机是针对大厚度的交错层压木(CLT)而特别设计研发的。

砂头交错式配置形式, 大间距开档(最大400mm), 大功率电机, 特殊的进板系统, 精确的砂头定位, 这一系列的结合使得本砂光机可生产出精确完美的砂光效果。

先进的人机界面系统, 配合Imeas全自动控制系统, 将砂头定位、砂带控制等复杂的调整工作变成了一项简单的操作。

Imeas公司的超级表现XL系列的砂光机可实现砂带长时间使用、成本降低和产量提升。



# LCI Grinders

*High productivity on HPL sheets and flexible coils*

Designed to process HPL sheets, the LCI-T is capable to process the thinnest foil of 0,3mm at the astonishing speed of 90 m/min!

This incredible performance is due to the special design of its three stages feed system that keep the laminate tensioned during the grinding process. The unique triangular-shaped unit keeps a convenient pass-line and increases the abrasive belt length thus improving efficiency and productivity.

For the production of continuous and flexible materials, such as HPL, PVC and others, we have developed a special version of our LCI grinder, which features wider grinding cylinders, wrapping rolls and advanced automation and controls suitable for integration into fully-automated lines.

All models are equipped with standard deionizing bars and hi-pressure cleaning systems.



LCI/220 FOR FLEXIBLE PVC COILS



LCI-T/160 FOR HPL SHEETS

## 用于防火板单板及卷材的高产能设备

LCI-T机型的设计是用于对高压防火板HPL进行背部砂光拉毛的重型机器,可以加工最薄为0.3mm的防火板,以令人惊讶的90米/分的高速进给。

该设备难以置信的完美表现是基于其特殊的三级进给系统的设计,该系统可以将整张防火板在砂光过程中始终处于被拉伸张紧的状态。三角形的砂光头设计使得机器的工作台面处于适合工人操作的舒适高度,

同时也增加了砂带的长度,提升了生产效率和产能。

而针对连续的柔性材料(如HPL、PVC和其它材料)生产,我们研发了特殊的LCI机型,它凭借直径尺寸优化过的接触砂辊、压辊和先进的自动控制系统,实现连续的完全自动化的生产。

所有机型均具备防静电装置和高压清洁系统。



# Full Control System™

*A technology that's a giant leap forward in sanding*

The futuristic **Full Control System™** (FCS) combines the best mechanics and electronics into an easy-to-use graphical interface.

With the easiness of a click, it is possible to control every aspect of the sanding process, from the start of a motor to the oscillation of the abrasive belt, the health of a bearing as well as the fine tuning of a sanding unit.

Data are displayed in a clear and uncluttered way, using color-coded icons and machine mimics that dramatically reduce the learning curve and boost productivity.

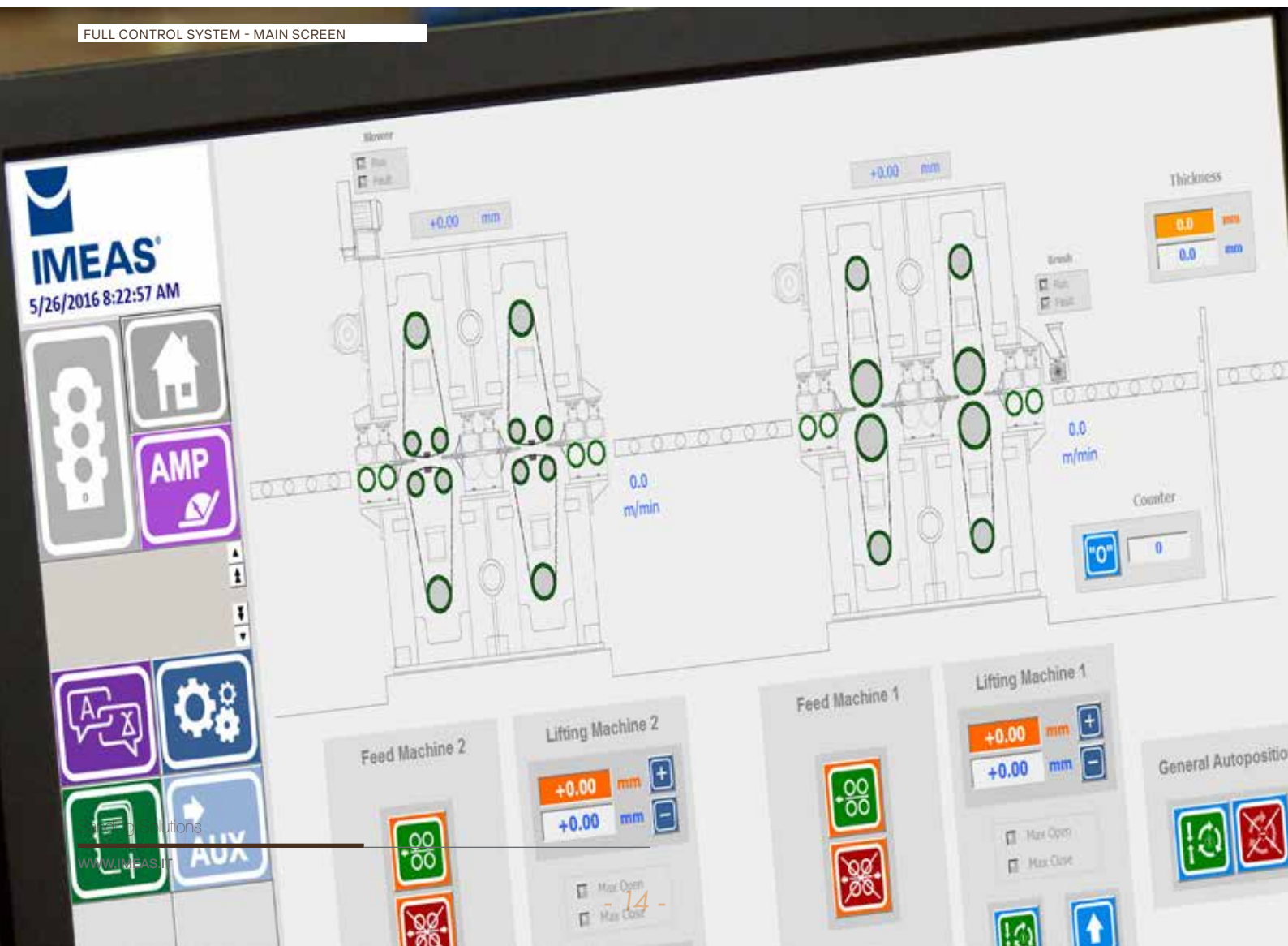
Working recipes, sanding policies, trends, logs and user-customizable alarms are useful to quickly preset the line and monitor the health of each machines.

The built-in Imeas **TeleAssistance™** service allows you not only to monitor the sanding line remotely but even to integrate it with your ERP system for data exchange and setting.

Needless to say, our solutions are ready for **Industry 4.0**.



FULL CONTROL SYSTEM - MAIN SCREEN



## 砂光线管理软件

FCS全自动控制系统是一套将机器的机械和电子结合在一起的、方便使用的图形操作界面系统。

只需轻触界面, 就可以控制砂光过程的方方面面, 从电机的启动, 到砂带的调偏, 从对轴承温度的监测, 到砂头的调整。

數據顯示在清晰有序, 使用彩色圖標, 照片的生產過程, 降低了系統的學習時間。

生產參數, 拋光方法, 發動機功率的變化, 機報警數據庫, 對於設備運行和監控可能出現的問題非常有用。

Imeas远程控制系统可对砂光线进行远程控制, 也可以与客户的ERP系统进行连线整合, 交换数据。



# References & Testimonials

## Who trusted us / 用户清单

### MDF/HDF

Abinsk — Alfa Wood Pindos — Asia Dekor — Baoshan Group — Bipan — Çamsan Wood Industry — Chung Dam — Dare Global Wood — Dong Wha — Egger — Fantoni — Fibranor — Fibranova — Fibraplac — Finsa — Hornitex — Guangdong Wulian — Kastamonu — Kronospan — Hebei Yingang — Hubei Bao Yuan Group — Lesonit — Masonite — Masisa — Paneles Arauco — Plum Creek — Pfeiderer — Pooya Arya Impregnated Pappaers — PT Masari Dwisepakat Fiber — Tever MDF — Unilin — Vitex — Yingang Sichuan WBP

### Particle board, MDP & OSB

Aglomerados Cotopaxi — Boise Cascade — Duratex — Eucatex — Fantoni — Finsa — Flakeboard — Friz Egger — Green River — Gruppo Frati — Gruppo Mauro Saviola — Guangxi Gaofeng Guishan WBP — Hengshui Bamailong — IBL — Jilin Forest Industry — Kronospan — Linex — IKEA — Masisa — Metro Fiber — Novopan del Ecuador — Paneles Arauco — Pooya Wood — Rechiza Drev — Sonae Novobord — Tafisa Canada — Tokyo board — Tomles Drev — Vanachai

### Plywood

Artoni & Fadani — Eagle Plywood — Fandok — Gomeldrev — Katsanis — IBL — ICTA — Invernizzi — Joubert — Metsäwood — Nordpan Rubner — Paneles Arauco — Panguaneta — Rechitsadrew — Triplay Amazonico — UPM Kymmene — Vigolungo

### Cross Laminated Timber

Boise Cascade — Kaufmann Mayr-Melnhof — KLH — Martinsons — Noritec Holzindustrie — Rombach Bauholz

### HPL, Flexible webs & Others

Abet Laminati — Alpi Laminati — Arpa Industriale — ASD Laminat — Forbo Giubiasco — James Hardie — Impre — Lamicolor — Slotex — Sunflower Corp. — Upofloor — Vetroresina — Wilsonart — Zao Tarkett

## What customers say about us / 客户对我们的看法?

*We purchased in recent years calibrating and sanding machines from company IMEAS S.p.A. because we believe it is a product of high technology fully designed and built in Italy.*

Invernizzi spa  
Italy

*We are writing this letter as a humble note of appreciation for the quality service provided by your office staff. We appreciate the way you have trained your staff and the way they are following their duty perfectly.*

Minox Metals Private Ltd.  
India

*We purchased calibrating and sanding machines from IMEAS S.p.A. because in the field of the wood basedpanel are the most reliable and efficient available on the market.*

Panguaneta spa  
Italy

*After carefully considering the experience and capabilities of several polishing machinery suppliers, in 2003 Phoenix Metals installed an Imeas automated stainless steel sheet polishing line.*

Phoenix Metals  
USA

*The company IMEAS can be appreciated especially because designs and manufactures its machines in Italy, constantly making innovations and technical updates that can also be installed on machines with over 10 years service, thus allowing us to always have updated and performing machinery.*

Frati Luigi spa  
Italy



# Parting Shot

Can you guess who made the  
grinders for the steel belts and press-plates  
of your press?



10-FEET WIDE IMEAS GRINDER FOR ENDLESS STAINLESS STEEL BELTS. COURTESY OF SANDVIK





## *Sanding Solutions*

### **IMEAS SPA**

VIA PACINOTTI, 36  
VILLA CORTESE  
20035 MILANO, ITALY  
TEL. +39 0331 4630 11  
FAX. +39 0331 4323 11  
IMEAS@IMEAS.IT  
WWW.IMEAS.IT

### **IMEAS INC.**

1415 SENOIA ROAD, SUITE A  
TYRONE, GA 30290, USA  
TEL. 001 (678) 364 1900  
FAX. 001 (678) 364 1920  
IMEAS@IMEAS.NET  
WWW.IMEAS.US

### **IMEAS AUSTRALASIA**

PO BOX 279  
3140 LILYDALE - VICTORIA  
AUSTRALIA  
TEL. +61 3 9735 2537  
MOB. +61 409 407 145  
ALANMCKINNA@ICLOUD.COM

**IMEAS AGENT**